

Can you create your own whistle to make scary sounds?

We found these websites useful with many instructions:

<https://geocities.restorativland.org/RainForest/Canopy/2525/whistles/whistle.html>

[http://web.archive.org/web/20120126142847/http://www.hominid.net/donna-goyer-whistle\\_making\\_sequence.htm](http://web.archive.org/web/20120126142847/http://www.hominid.net/donna-goyer-whistle_making_sequence.htm)

<https://www.incredibleart.org/files/whistles.htm>

Suggestion: 10 children max.

Equipment needed:

- Clay - we used air drying clay. It took about 24 hours before it was dry enough to paint. 'Sculpt Dry - Air Dry Clay' 500g = £1.99 makes 4 animals.
- Tools - see image. Including; smoothing tool, stippling tool/fork, holes tool, lolly stick.
- Plastic to cover the table.
- A pot of water to create slip and keep the clay wet for sculpting.
- Hand washing facilities.



Takes at least 45 minutes to create.

Method:

1. Make 2 balls of clay.
2. With each ball create a pinch pot, by pinching the edges of the clay and pushing your thumb into the middle of the clay. See image.
3. Press and smooth until the clay is even in thickness.
4. Make another pinch pot of the same size. They will be joined together.
5. Scratch the edges of the pots with a fork/tool and add water or slip. See image.
6. Press two halves together.
7. Smooth over the joints with a tool and water until no join can be seen. See image.



8. Make a mouthpiece using another ball of clay by pushing a lolly stick through the clay. See image
9. Remove the stick from the mouthpiece by pushing it off gently.

10. Now you will attach the mouthpiece to the body. Method 1 is easier, but does not produce a sound. Method 2 will allow your whistle to make a noise.



### Method 1

1. Make a hole in the sealed pots, or leave a hole when you are initially making the body of the whistle.
2. Add the mouthpiece to the hole.
3. Scratch/score the edges and add water or slip to attach the mouthpiece to the main body of the whistle.

### Method 2

1. Using the lolly stick, make a hole in the pinch pots at an angle, and widen it out.



2. Place the mouthpiece in the slot, leaving a space at the top for air to escape. See diagram.



3. Scratch/score the edges and add water or slip, smoothing the clay to attach it to the main body of the whistle.

11. Make a hole, with a tool, in the side. See images below.





12. Once your whistle is ready, you can decorate it. See images below adding a head.



13. You can carve into it or add to it.

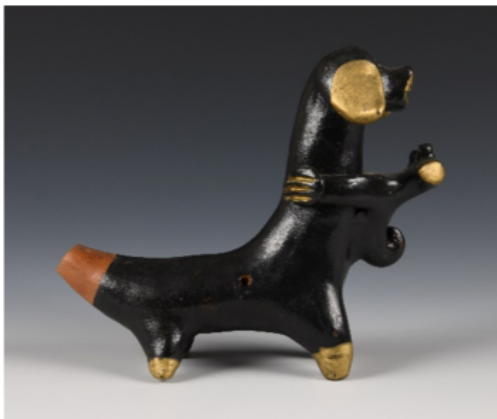


14. Wait 24 hours until it is completely dry before you paint your whistle. Watercolours or poster paint works well.



Here are some examples of whistle shapes.

- Can you spot which ones are in the 'Enchanted Treasures' exhibition?



Post a photo of your whistle online #OrientalMuseum if you can.